



GMT MONTHLY MEMBERSHIP PROGRESS REPORT

Results as of: 1/31/2024

Multiple District 16

LOCATION: NEW JERSEY

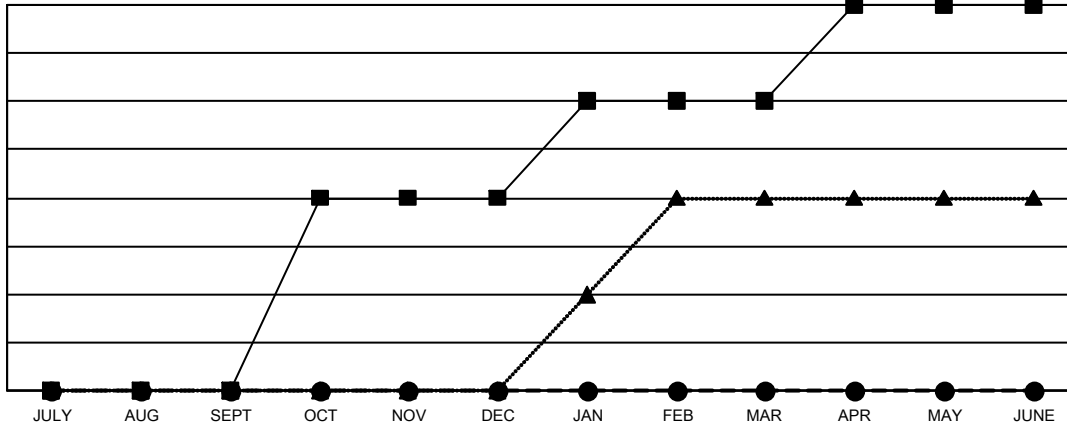
GMT: OPEN

GMT CA 1

Clubs			
RESULTS FOR 2023-2024			
QUARTER	NEW CLUB GOAL	NEW CLUBS	DROPPED CLUBS
JULY/AUG/SEPT	0	0	2
OCT/NOV/DEC	2	0	4
JAN/FEB/MAR	1	0	1
APR/MAY/JUNE	1	0	0

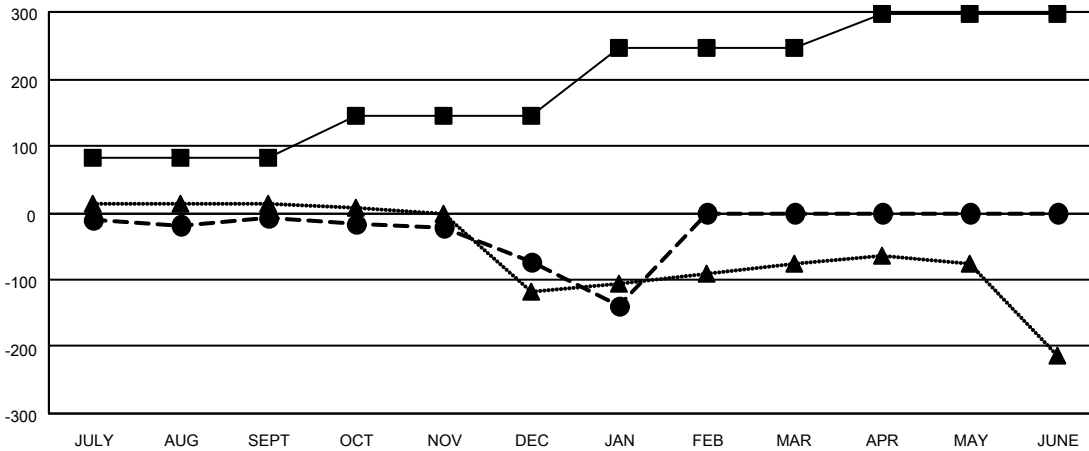
Members			
RESULTS FOR 2023-2024			
QUARTER	MEMBER GROWTH NET GOAL	MEMBER GROWTH ACTUAL	DROPPED MEMBERS ACTUAL (including transfers)
JULY/AUG/SEPT	82	117	105
OCT/NOV/DEC	62	100	148
JAN/FEB/MAR	102	14	80
APR/MAY/JUNE	52	0	0

GOALS AND ACTUAL NEW CLUBS CUMULATIVE



- - CURRENT YEAR GOALS FOR NEW CLUBS
- - CURRENT YEAR ACTUAL NEW CLUBS
- ▲ - LAST YEAR ACTUAL NEW CLUBS

GOALS AND ACTUAL MEMBERS CUMULATIVE



- - MEMBER GROWTH NET GOAL
- - MEMBER GROWTH ACTUAL
- ▲ - LAST YEAR MEMBERSHIP ACTUAL

DROPPED CLUBS: 7	63 CLUBS OF 160 ADDED 1 OR MORE NEW MEMBERS	GENDER DISTRIBUTION
		MALE 2,398 (64.99%)
		FEMALE 1,292 (35.01%)
DROPPED MEMBERS	CLICK HERE FOR CUMULATIVE MEMBERSHIP DATA	TOTAL FAMILY UNIT MEMBERS 720
DECEASED 32		FAMILY MEMBERS PAYING HALF DUES 377
CLUB CANCELLED 60		
OTHER 241		
TOTAL 333		